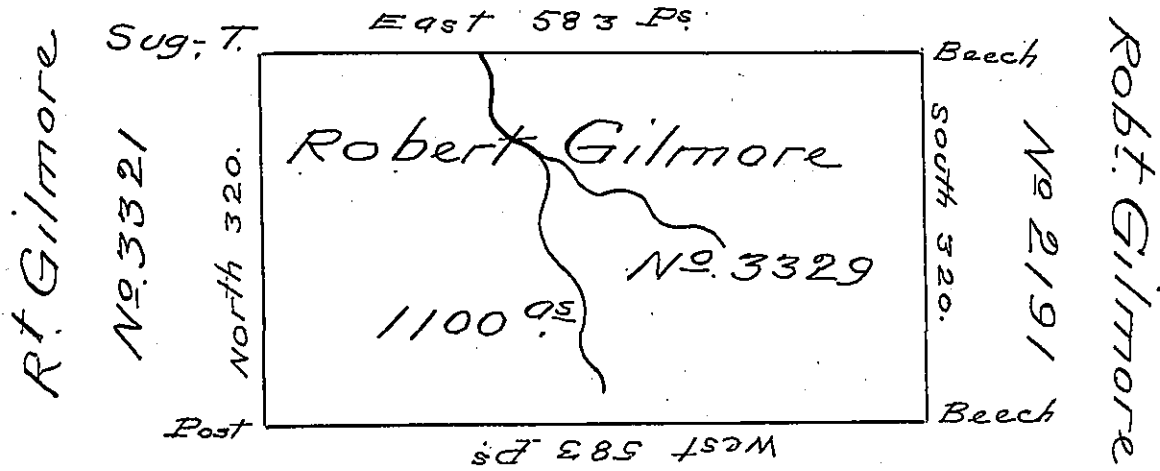


Rt. Gilmore

No 3332.



Rt Gilmore

No 3321

Robt Gilmore

No 2191

No 2283

Wm. Bingham Esqre

Situate on the West Side of East Branch  
 of Ischunungwandt Creek Seven Miles South  
 of the State Line in the last Purchase Dis-  
 trict No 4 Surveyed June the twenty eighth  
 1793 in Pursuance of a Warrant to Robert  
 Gilmore No 3329 Dated the fourteenth day  
 of December 1792 for 1000 Acres

Containing Eleven hundred acres and the  
 usual Allowance of Six PE. CT. for Roads.

PE. James Hunter DS

To Daniel Brodhead Esqre S. G.

June 28<sup>th</sup>

IN TESTIMONY that the above is a copy of the original remaining on file in  
 the Department of Internal Affairs of Pennsylvania, made  
 conformably to an Act of Assembly approved the 16th day of  
 February, 1833, I have hereunto set my Hand and caused  
 the Seal of said Department to be affixed at Harrisburg,  
 this Twenty sixth day of October 1904.

*Loae R. P. Perry*  
 Secretary of Internal Affairs.